



Contents

Introduction	
Safety instructions	1
Before use, cleaning & maintenance	2
Technical data	2
Box contents	2
Warranty	Turn Page
Operation instructions	
Description and features	3
Remote control operation	3
Installation	
Pergola mounting	4
Troubleshooting	5

Safety instructions

WARNING - When using electrical appliances, basic safety precautions should always be followed. Failure to comply with these instructions may cause a fire, electrical shocks or other injury to persons or property.

- 1 Children of less than 3 years should be kept away unless continuously supervised.
- 2 Children between 3 and 8 years old should only be allowed to switch the appliance on/off, provided that it has been correctly installed in its intended operating position and they have been given supervision or instruction concerning the safe use of the appliance and understand the hazards involved. They should not plug in, regulate, perform maintenance or clean the appliance.
- 3 DO NOT insert or allow objects to touch the heating element and never place anything on the heater safety guard (e.g. towels), as this may damage the heater and could cause an electrical shock or fire. Never use your heater to dry washing. If the heating element has stopped glowing it may still be live, please check that the heat setting indicates the heater is off. Always disconnect your appliance from the mains before any cleaning.
- 4 DO NOT use the heater in areas where petrol, paint, or other flammable substances are stored. In order to avoid overheating, do not cover the heater.
- 5 Always unplug the heater when not in use. To disconnect from the power supply, grip the plug and pull from the power socket. Never pull by the cord.
- 6 DO NOT direct the heater towards curtains, furniture or other flammable objects.
- 7 Extreme care should be taken when the heater is used near children and pets.
- 8 Do not use the heater with a programmer, timer or any other device that switches the heater on automatically, since a fire risk exists if the heater is covered or positioned incorrectly. Heater should not be positioned directly under a socket outlet.
- 9 The front grille is intended to prevent direct access to the heating elements and must be in place when the heater is on. The electrical cord must be fully unwound before use.
- 10 This appliance can be used by children aged from 8 years and above and persons with reduced physical, sensory or mental capabilities or lack of experience and knowledge if, they have been given supervision or instruction concerning use of the appliance in a safe way and understand the hazards involved. Children should not play with the appliance. Cleaning and maintenance should not be attempted by children without supervision.
- 11 If the supply cord is damaged, it must be replaced by the manufacturer, its service agent or similarly qualified persons in order to avoid a hazard.
- 12 CAUTION — Some parts of this product can become very hot and cause burns. Particular attention has to be given where children and vulnerable people are present.
- 13 WARNING: This heater is not equipped with a device to control the room temperature. Do not use this heater in small rooms when they are occupied by persons not capable of leaving the room on their own, unless constant supervision is provided.

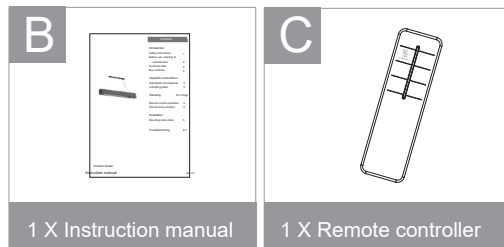
Before use, cleaning & maintenance

This product has been designed for domestic and commercial use, to heat spaces using energy efficient carbon fibre infrared technology. It must only be used for this intended purpose and should be operated according to the instructions included in this manual. Please carefully read all operating and safety instructions before use. Never cover appliance when in operation and ensure that flammable objects (clothes, curtains, etc.) cannot come in close contact with the appliance. You may also find this manual's content at www.masonshek.com

Before cleaning or changing heating tubes, turn the heater off, unplug from the power supply and wait for the unit to cool down.

- 1, To clean the heater use a soft cloth to wipe off any dust.
- 2, If the heater is very dirty, use a damp cloth and wipe dry. Do not use any cleaning detergents, sprays or other chemicals, as they will damage the unit.
- 3, When the heater is not in use for a long period, clean and cover it.

Model No.: RHT031
Power output : 1500W 120V AC ~ 60Hz
Heater watts : 1500W
Cable length : 6.0m or as per outer box
Gross weight : 4.1kgs Net weight : 3.5kgs
Product Dimension: L80*W9*H10cm



Appropriate Country Testmark on Equipment

In accordance with the UK guidelines for safety

In accordance with the Russian Federation safety regulations.



In accordance with the European guidelines for safety, CE / EMC / GS and



In accordance with the Canada or USA guidelines for safety

In accordance with the NZ/AU guidelines for safety, C-TICK, SAA



This marking indicates that this product should not be disposed with other household wastes throughout the EU. To prevent possible harm to the environment or human health from uncontrolled waste disposal, recycle it responsibly to promote the sustainable reuse of material resources. To return your used device, please use the return and collection systems or contact the retailer where the product was purchased. They can take this product for environmental safe recycling.



IMPORTANT: At the end of their life dispose of the batteries in your remote control according to local Authority regulations. Do not dispose of batteries with your normal household rubbish.



This product is RoHS compliant



We reserve the right to make changes in design, equipment, technical data as well as errors.

Guarantee

We are confident of the quality of its products and offers 2 year guarantee. This guarantee is in addition and in no way affects your statutory rights. The guarantee is valid within the territories where the products are marketed. With this appliance you get a two year guarantee starting from the date of purchase. Under the guarantee, in the case of material or manufacturing defects, the appliance will be replaced or repaired.

Excluded from the guarantee is normal wear and tear, alterations to the appliance as purchased, cleaning activities, consequences of improper use

or damage by the purchaser or a third person, damage, that can be attributed to external circumstances, couriers or caused by the batteries. If a full replacement is required we will uplift the unit as the guarantee requires that the faulty appliance be returned for examination along with the retail outlet's dated and signed guarantee card or sales receipt (where applicable).

Guarantee excludes heating tube / battery

SENSOR
Far infrared Carbon fibre Tech Remote Receiver

ON/OFF
Heat On/Off button



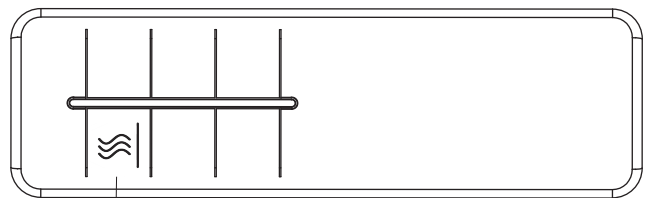
Power ON/OFF switch
Turn on to activate control panel & remote control

HEAT
Power & Heating indicator
When it flickers, Power is on.
When it lights, Heating is on.

The product is IPX5 weatherproof certified.
We recommend that you should cover the product when not in use for long periods of time .



You need to turn on the Power Switch before you can operate from the Remote Controller.
Operational range of remote is approx 10m (open air).

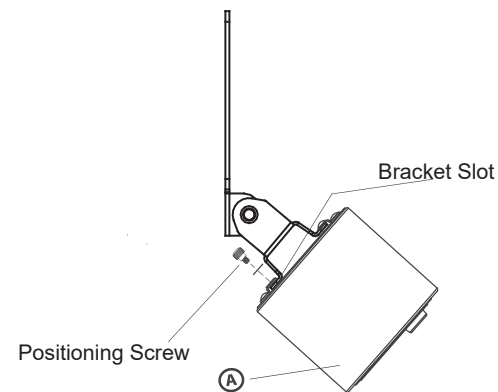
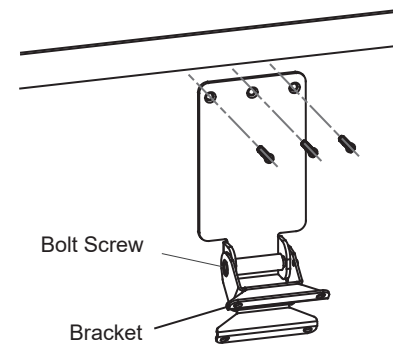


HEAT
press to turn the heat on of off
(for pairing: when press power on button, press the heat button within 5 seconds.)

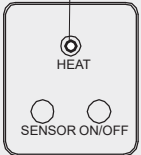
Replace AAA battery
at the back of the Remote

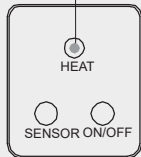
Pergola Mounting instructions

Make sure your heater is mounted at least 180cm high from the floor and 0.5Mitre away from other objects



Troubleshooting

Problem	Possible cause	Solution
<p>Heater won't operate (indicated by the absence of the HEAT indicator on the panel)</p> <p>Not visible or flickering</p> 	<p>Power Switch OFF</p> <p>No Power to unit</p> <p>Power Cord Damaged</p>	<p>Turn Power Switch ON.</p> <p>Check the mains or the electrical socket to restore circuit.</p> <p>Inspect power cable for cuts, breaks and kinks. Replacement power cords and fitting instructions can be obtained from the technical helpdesk -- see warranty card.</p>

Problem	Possible cause	Solution
<p>Heat tubes not working (indicated by the presence of the HEAT indicator on the panel)</p> <p>Visible or flickering</p> 	<p>Tube Failure</p> <p>Blown Carbon Fibre Tubes</p>	<p>Firstly try the following procedures to ensure it is in fact that the tube is faulty.</p> <ol style="list-style-type: none"> 1) Press the remote HEAT button again just to check the tube doesn't heat up. 2) If the HEAT indicator on the panel only flickering – the remote may be out of battery. Press the ON/OFF button on the panel until 3) the HEAT indicator is ON. In this case if the heating is not coming, the tube has blown. Replace the Tube. <p>Repeat if necessary.</p> <p>If this continues to occur please call the technical helpdesk -- see warranty card.</p> <p>This unit uses specialised high temperature carbon fibre heating tubes only. For replacements, please call the technical helpdesk -- see warranty card.</p> <p>Blown tubes are usually visible. Check for black or white discolouration at either end of the tubes.</p>

Problem	Possible cause	Solution
Remote control inoperative	Battery dead	<p>Make sure the blue indicator (HEAT) is visible otherwise you need to replace battery (AAA).</p> <p>Remove and replace the battery according to the instruction on the back of the Remote controller.</p>